

# 1080 Pest Animal Bait

## Notification to Neighbours of Vertebrate Pest Control Using 1080

### To THE LANDHOLDER/OCCUPIER

The **Department of Environment, Land, Water and Planning (DELWP)** will be undertaking a 1080 pest animal poisoning program using aerially deployed fresh meat baits on public land at:

**See attached maps (6)** – to control *Wild Dogs*.

Awareness of 1080 bait use on Public Land by DELWP is vital for the safe management of domestic animals. If a property is occupied or used by persons other than yourself, the provision of this information, by you to them may reduce the potentially negative impacts of 1080 on domestic animals such as pets and working dogs.

The poison to be used is **compound 1080 (sodium fluoroacetate)** which is contained within an approved bait type for the pest species.

Poisoning will occur from **3 May to 14 June 2021** and the baits will not be collected.

This program is being conducted under an off-label section 25A permit to allow baits to be deployed from the air. All care has been taken to ensure the conditions for use will reduce the chances of non-target animal impacts but there is still some associated risk. By being aware of the dangers you are able to help manage the risk.

### To minimise the risk of poisoning to your animals you are advised:

1. Confine, muzzle and/or restrain your domestic animals, particularly dogs and cats, to prevent them from accessing 1080 pest animal poison baits or carcasses.
2. Domestic animals, particularly dogs and cats, are susceptible to primary poisoning from ingesting 1080 pest animal bait products and secondary poisoning from ingesting contaminated carcasses. It is unusual for domestic animals to scavenge on dog carcasses.
3. Closely monitor the health and behaviour of your domestic pets. If you notice any unusual or uncharacteristic behaviour contact your local veterinarian immediately.
4. There is a delay in the poison action of 1080 and animals that have ingested 1080 pest animal bait products may die on your property.
5. Collect and destroy any poisoned carcasses you find by burning (in accordance with local regulations) or burying to a depth of at least 50 cm for rabbits and at least 1 metre for foxes, wild dogs and feral pigs.
6. Always dispose of carcasses away from natural features such as waterways.

### Dangers to Humans:

**Compound 1080 (sodium fluoroacetate)** is a restricted schedule 7 poison and there is no known antidote. If you are handling poison bait and/or carcasses always use protective rubber gloves and wash hands and gloves thoroughly after contact. When used in accordance with the product label and Directions for the Use of 1080 and PAPP Pest Animal Bait Products in Victoria, there is little risk of humans being poisoned by 1080 pest animal bait products.

Although the 1080 used in 1080 pest animal bait products is substantially diluted, 1080 pest animal baits and poisoned carcasses must be treated with care.

**If poisoning occurs immediately contact a doctor or the Poisons Information Centre on 13 11 26**

Further information on the use and handling of 1080 is available from 1080 pest animal bait manufacturers.

### For further information please contact:

#### Gippsland Region

Wayne Peters  
Gippsland Operations Manager – Wild Dogs  
Telephone: 0429 401 217

#### Hume/North East Region

Tim Enshaw  
Project Manager - Wild Dog Program  
Telephone: 0429 129 962

Information and maps also available on the Agriculture Victoria Website: <http://agriculture.vic.gov.au/>

**Date:** 23 April 2021

**All transects to be baited will have 1080 poison signs erected**

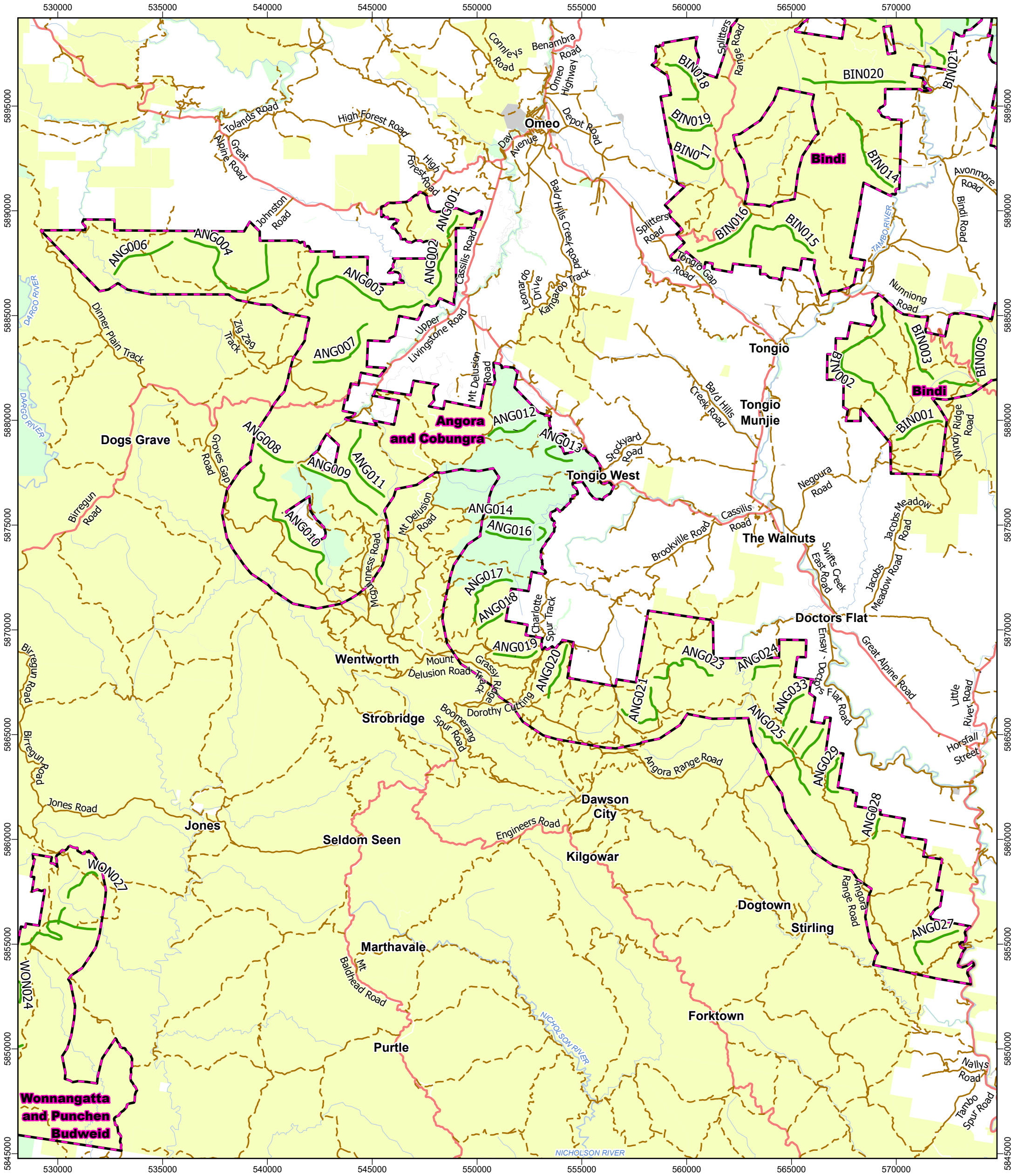
Disclaimer: This publication may be of assistance to you but the State of Victoria and its employees do not guarantee that the publication is without flaw of any kind or is wholly appropriate for your particular purposes and therefore disclaims all liability for any error, loss or other consequence which may arise from you relying on any information in this publication.



Environment,  
Land, Water  
and Planning

# DELWP Wild Dog Program - Aerial Baiting - Autumn 2021

## Aerial Baiting Area: Angora and Cobungra



Document Path: C:\Users\ds20\OneDrive - VicGov\ArcGIS Projects\WildDogs\Notifications\AerialBaiting\_2021\_Autumn\Notification\_AerialBaiting\_2021\_Autumn.aprx

### Copyright

© The State of Victoria  
Department of Jobs, Precincts and Regions, 2021

### Disclaimer

This publication may be of assistance to you but the State of Victoria and its employees do not guarantee that the publication is without flaw of any kind or is wholly appropriate for your particular purposes and therefore disclaims all liability for any error, loss or other consequence which may arise from you relying on any information in this publication.

### Accessibility

If you would like to receive this publication in an alternative format, please telephone the Customer Service Centre on 136 186 or email [customer.service@delwp.vic.gov.au](mailto:customer.service@delwp.vic.gov.au), via the National Relay Service on 133 677 or [www.relayservice.com.au](http://www.relayservice.com.au).

Author: ds20  
Project Officer - GIS and Systems Support,  
Department of Jobs, Precincts and Regions

Date Produced: 17/03/2021 11:44 AM

Spatial Reference:  
Name: GDA2020 MGA Zone 55  
PCS: GDA2020 MGA Zone 55  
GCS: GDA2020  
Datum: GDA2020  
Projection: Transverse Mercator

Aerial Baiting Area

Aerial Baiting Transect

### Public Land

Park and Reserve

State Forest

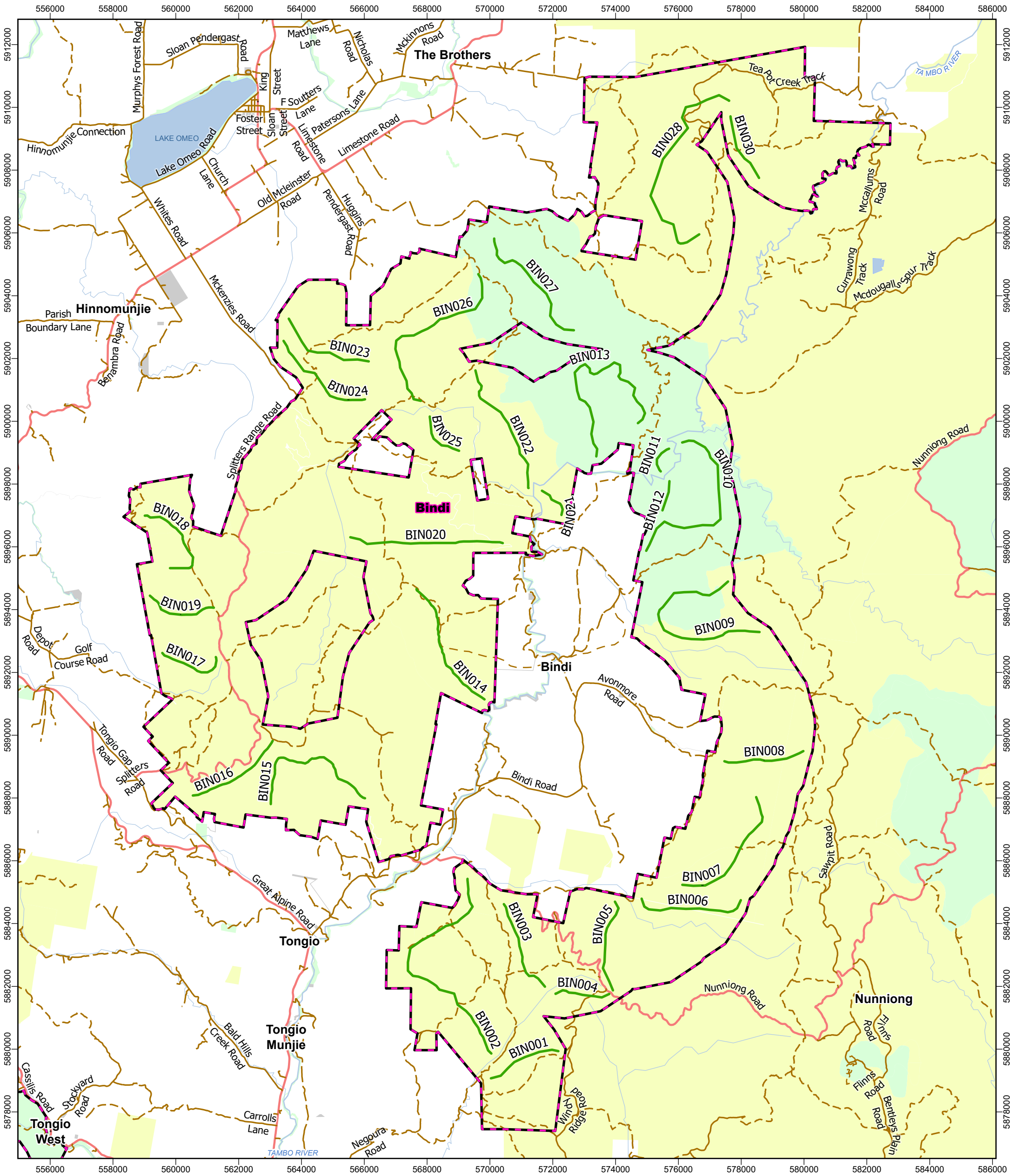
Other Public Land





# DELWP Wild Dog Program - Aerial Baiting - Autumn 2021

## Aerial Baiting Area: Bindi



Document Path: C:\Users\ds20\OneDrive - VicGov\ArcGIS Projects\WildDogs\Notifications\AerialBaiting\_2021\_Autumn\Notification\_AerialBaiting\_2021\_Autumn.aprx

Aerial Baiting Area

Aerial Baiting Transect

### Public Land

Park and Reserve

State Forest

Other Public Land

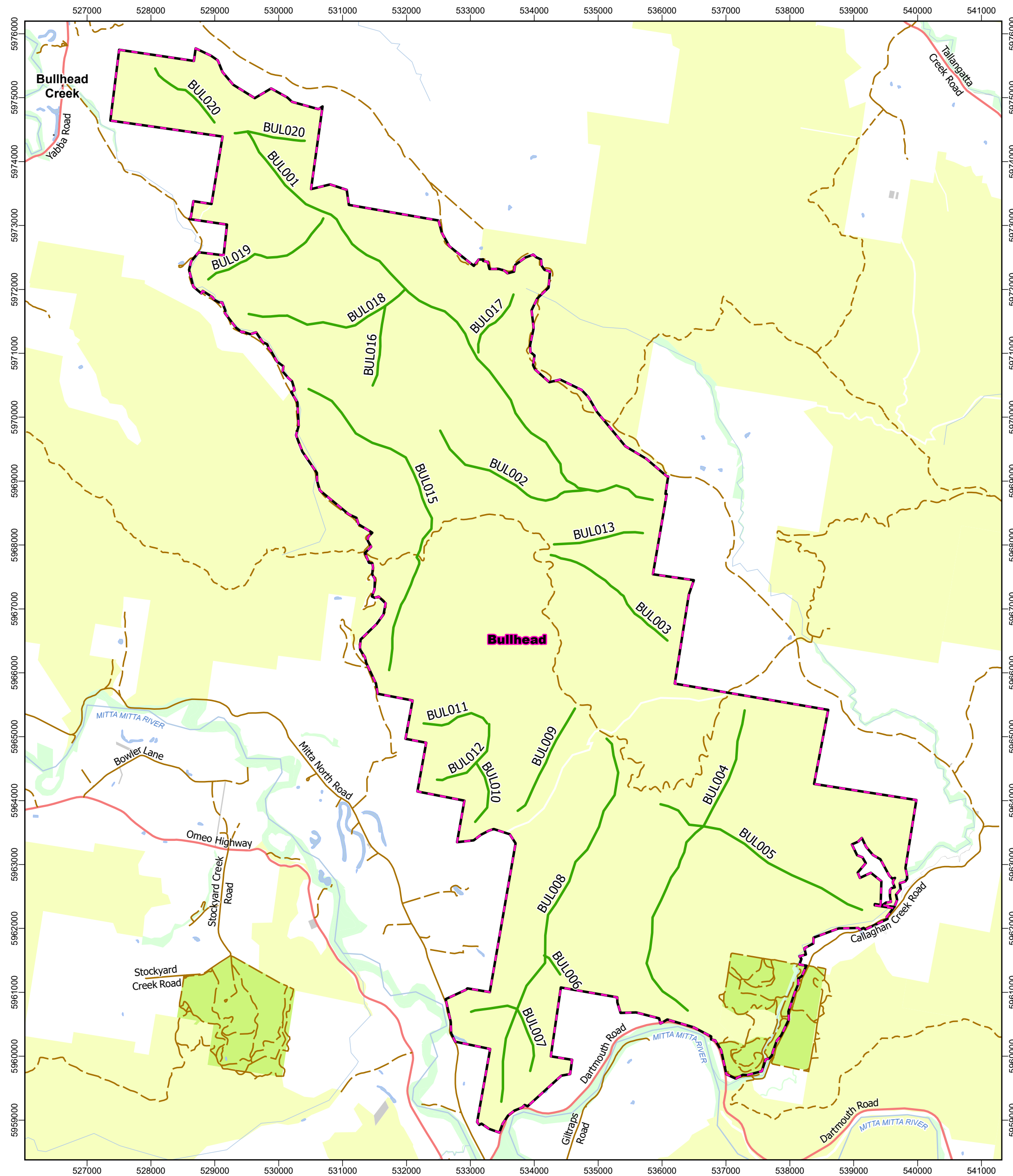


**Copyright**  
© The State of Victoria  
Department of Jobs, Precincts and Regions, 2021  
**Disclaimer**  
This publication may be of assistance to you but the State of Victoria and its employees do not guarantee that the publication is without flaw of any kind or is wholly appropriate for your particular purposes and therefore disclaims all liability for any error, loss or other consequence which may arise from you relying on any information in this publication.  
**Accessibility**  
If you would like to receive this publication in an alternative format, please telephone the Customer Service Centre on 136 186 or email [customer.service@delwp.vic.gov.au](mailto:customer.service@delwp.vic.gov.au), via the National Relay Service on 133 677 or [www.relay.vic.gov.au](http://www.relay.vic.gov.au).

Author: ds20  
Project Officer - GIS and Systems Support,  
Department of Jobs, Precincts and Regions  
Date Produced: 17/03/2021 11:45 AM  
Spatial Reference:  
Name: GDA2020 MGA Zone 55  
PCS: GDA2020 MGA Zone 55  
GCS: GDA2020  
Datum: GDA2020  
Projection: Transverse Mercator

# DELWP Wild Dog Program - Aerial Baiting - Autumn 2021

## Aerial Baiting Area: Bullhead



Document Path: C:\Users\ds20\OneDrive - VicGov\ArcGIS Projects\WildDogs\Notifications\AerialBaiting\_2021\_Autumn\Notification\_AerialBaiting\_2021\_Autumn.aprx

**Copyright**  
© The State of Victoria  
Department of Jobs, Precincts and Regions, 2021

**Disclaimer**

This publication may be of assistance to you but the State of Victoria and its employees do not guarantee that the publication is without flaw of any kind or is wholly appropriate for your particular purposes and therefore disclaims all liability for any error, loss or other consequence which may arise from you relying on any information in this publication.

**Accessibility**  
If you would like to receive this publication in an alternative format, please telephone the Customer Service Centre on 136 186 or email [customer.service@delwp.vic.gov.au](mailto:customer.service@delwp.vic.gov.au), via the National Relay Service on 133 677 or [www.relayservice.com.au](http://www.relayservice.com.au).

Author: ds20  
Project Officer - GIS and Systems Support,  
Department of Jobs, Precincts and Regions

Date Produced: 17/03/2021 11:45 AM

Spatial Reference:  
Name: GDA2020 MGA Zone 55  
PCS: GDA2020 MGA Zone 55  
GCS: GDA2020  
Datum: GDA2020  
Projection: Transverse Mercator



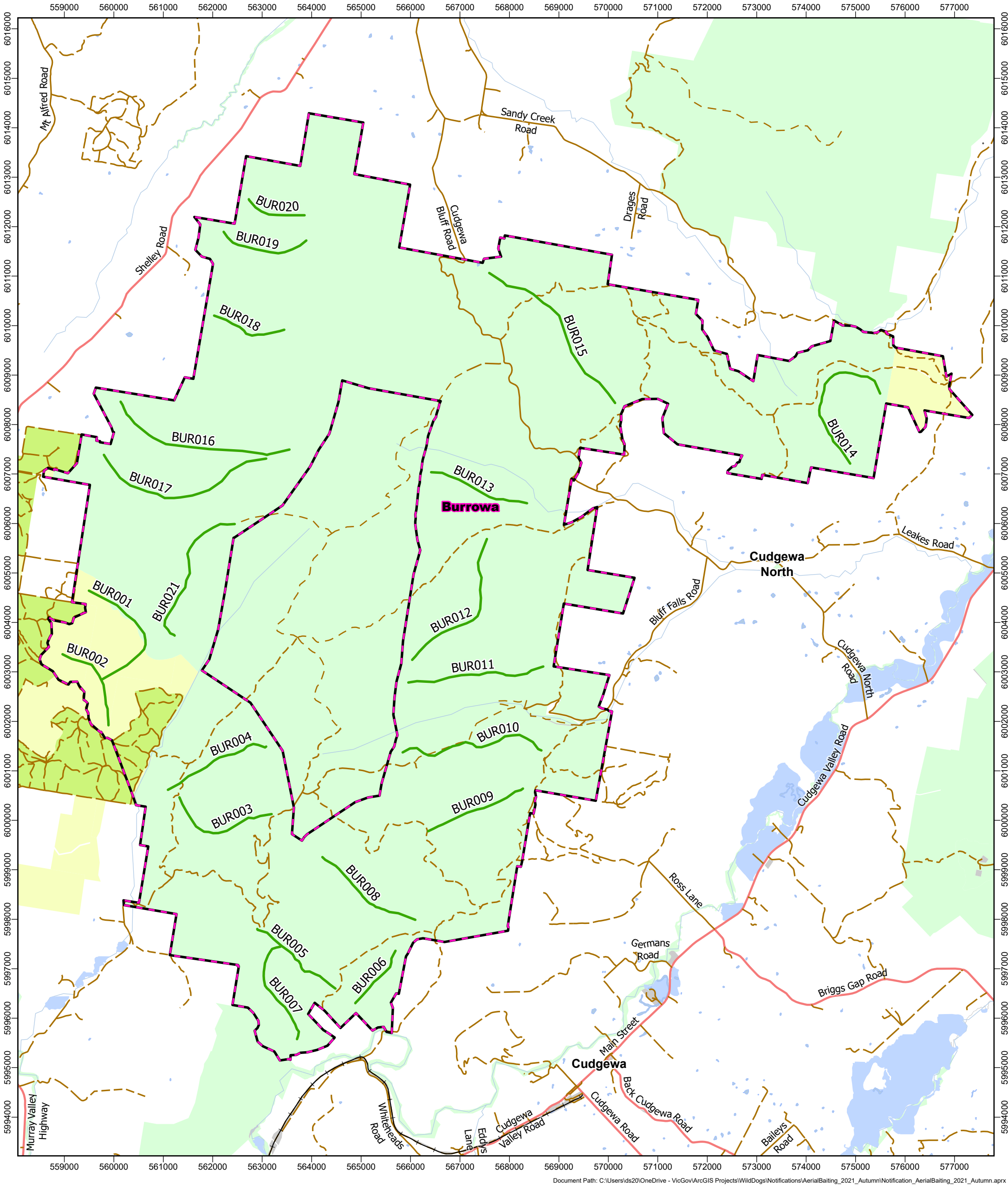
- Aerial Baiting Area
- Aerial Baiting Transect
- Public Land**
  - Park and Reserve
  - State Forest
  - Other Public Land
  - Plantation





# DELWP Wild Dog Program - Aerial Baiting - Autumn 2021

## Aerial Baiting Area: Burrowa



Document Path: C:\Users\ds20\OneDrive - VicGov\ArcGIS Projects\WildDogs\Notifications\AerialBaiting\_2021\_Autumn\Notification\_AerialBaiting\_2021\_Autumn.aprx

### Copyright

© The State of Victoria  
Department of Jobs, Precincts and Regions, 2021

### Disclaimer

This publication may be of assistance to you but the State of Victoria and its employees do not guarantee that the publication is without flaw of any kind or is wholly appropriate for your particular purposes and therefore disclaims all liability for any error, loss or other consequence which may arise from you relying on any information in this publication.

### Accessibility

If you would like to receive this publication in an alternative format, please telephone the Customer Service Centre on 136 186 or email [customer.service@delwp.vic.gov.au](mailto:customer.service@delwp.vic.gov.au), via the National Relay Service on 133 677 or [www.relay.vic.gov.au](http://www.relay.vic.gov.au).

Author: ds20

Project Officer - GIS and Systems Support,  
Department of Jobs, Precincts and Regions

Date Produced: 17/03/2021 11:45 AM

Spatial Reference:

Name: GDA2020 MGA Zone 55

PCS: GDA2020 MGA Zone 55

GCS: GDA2020

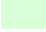
Datum: GDA2020

Projection: Transverse Mercator

 Aerial Baiting Area

 Aerial Baiting Transect

### Public Land

 Park and Reserve

 State Forest

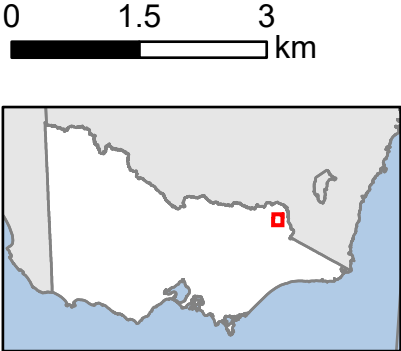
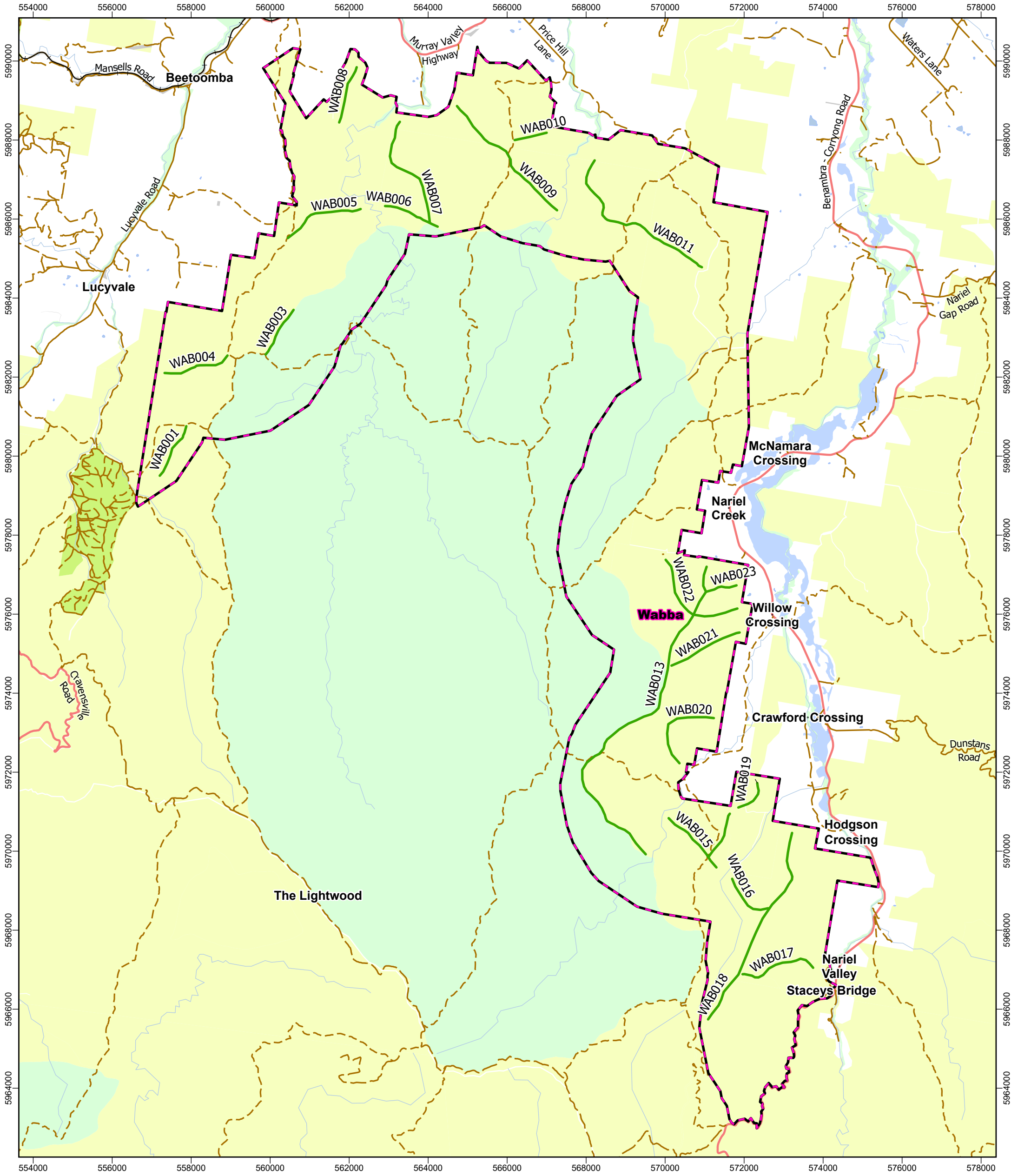
 Other Public Land

 Plantation



# DELWP Wild Dog Program - Aerial Baiting - Autumn 2021

## Aerial Baiting Area: Wabba



- Aerial Baiting Area
- Aerial Baiting Transect
- Public Land**
  - Park and Reserve
  - State Forest
  - Other Public Land
  - Plantation

Document Path: C:\Users\ds20\OneDrive - VicGov\ArcGIS Projects\WildDogs\Notifications\AerialBaiting\_2021\_Autumn\Notification\_AerialBaiting\_2021\_Autumn.aprx

**Copyright**  
© The State of Victoria  
Department of Jobs, Precincts and Regions, 2021

**Disclaimer**  
This publication may be of assistance to you but the State of Victoria and its employees do not guarantee that the publication is without flaw of any kind or is wholly appropriate for your particular purposes and therefore disclaims all liability for any error, loss or other consequence which may arise from you relying on any information in this publication.

**Accessibility**  
If you would like to receive this publication in an alternative format, please telephone the Customer Service Centre on 136 186 or email [customer.service@delwp.vic.gov.au](mailto:customer.service@delwp.vic.gov.au), via the National Relay Service on 133 677 or [www.relayservice.com.au](http://www.relayservice.com.au).

**Author:** ds20  
**Project Officer:** - GIS and Systems Support, Department of Jobs, Precincts and Regions

**Date Produced:** 17/03/2021 11:45 AM

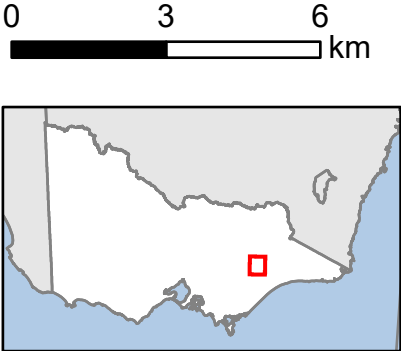
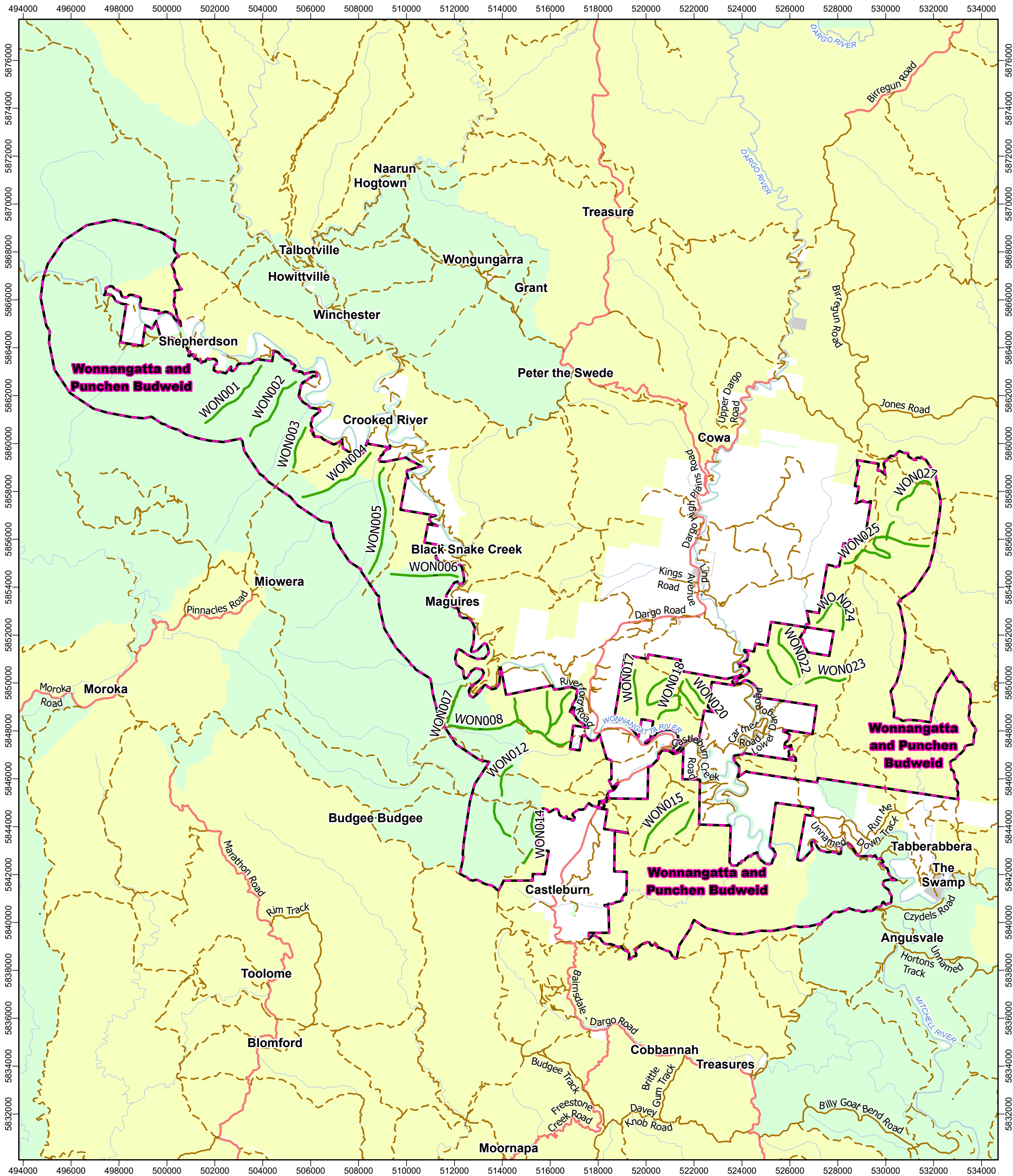
**Spatial Reference:**  
**Name:** GDA2020 MGA Zone 55  
**PCS:** GDA2020 MGA Zone 55  
**GCS:** GDA2020  
**Datum:** GDA2020  
**Projection:** Transverse Mercator





# DELWP Wild Dog Program - Aerial Baiting - Autumn 2021

## Aerial Baiting Area: Wonnangatta and Punchen Budweid



- Aerial Baiting Area

Aerial Baiting Transect
- Public Land**

Park and Reserve

State Forest

Other Public Land

Document Path: C:\Users\ds20\OneDrive - VicGov\ArcGIS Projects\WildDogs\Notifications\AerialBaiting\_2021\_Autumn\Notification\_AerialBaiting\_2021\_Autumn.aprx

**Copyright**  
© The State of Victoria  
Department of Jobs, Precincts and Regions, 2021

**Disclaimer**  
This publication may be of assistance to you but the State of Victoria and its employees do not guarantee that the publication is without flaw of any kind or is wholly appropriate for your particular purposes and therefore disclaims all liability for any error, loss or other consequence which may arise from you relying on any information in this publication.

**Accessibility**  
If you would like to receive this publication in an alternative format, please telephone the Customer Service Centre on 136 186 or email [customer.service@delwp.vic.gov.au](mailto:customer.service@delwp.vic.gov.au), via the National Relay Service on 133 677 or [www.relayservice.com.au](http://www.relayservice.com.au).

Author: ds20  
Project Officer - GIS and Systems Support,  
Department of Jobs, Precincts and Regions

Date Produced: 17/03/2021 11:45 AM

**Spatial Reference:**  
Name: GDA2020 MGA Zone 55  
PCS: GDA2020 MGA Zone 55  
GCS: GDA2020  
Datum: GDA2020  
Projection: Transverse Mercator

The logo of the Victoria State Government, featuring a stylized blue triangle with the word "VICTORIA" in white and "State Government" in smaller text below it.